

www.pfi.it

Dock leveler
Assembly manual



CE

PFI 
ACCESS WAY SOLUTIONS

ATTENTION! GENERAL WARNINGS!

TO INSTALL, USE AND MAINTAIN THIS DOOR SAFELY, A NUMBER OF PRECAUTIONS MUST BE TAKEN. FOR THE SAFETY OF ALL CONCERNED PAY HEED TO THE WARNINGS AND INSTRUCTIONS GIVEN BE LOW! IF IN DOUBT, CONTACT YOUR SUPPLIER.

1. GENERAL INFORMATION

1.1 Purpose and content of the manual

The information contained in this manual is intended for professionals who know how to use the product.

The indications contained in this manual must be scrupulously observed, in order to obtain the best performance, to guarantee the maximum duration of the various components of the product and to avoid damage to it and accidents to operators.

The manual also contains all the information for correct and safe use and instructions for correct and rational commissioning, storage and maintenance.

We recommend that you read this manual carefully before you start using the product.

The manual must be considered an integral part of the product, must accompany it during its use and must be delivered to the new buyer in case of resale.

This manual may be subject to changes and / or additions in the future therefore there is no obligation on the part of PFI to inform all purchasers of the previous manuals which cannot be considered inadequate.

Any communication on updates is to be considered a pure form of courtesy.

The information contained in this manual is owned by PFI.

! The photos, illustrations and technical drawings shown in this manual are for illustration purposes only, therefore some details and / or parts shown may differ from those of the real product, but this does not affect the validity of the information shown!

1.2 Recipients of the manual

1.3 Manufacturer's responsibility

This manual is intended for the user. It must be kept by a person responsible for the intended purpose, in a suitable place, so that it is always available for consultation in the best state of conservation.

In the event of loss or deterioration, the replacement documentation must be requested, citing the serial number and model of the product directly to PFI.

! Anyone who uses the product must know the manual perfectly!

All documents contained in this manual must always follow the product.

The products of PFI are designed and manufactured according to the provisions of the current regulations, therefore their use, if correctly performed within the limits imposed by the manufacturer and reported in this publication, is to be considered safe and reliable.

Tampering and / or modifications of any kind are not allowed, nor the replacement of parts with non-original spare parts.

All interventions and / or maintenance must be carried out only by the personnel of the PFI Authorized Center.

Structural or plant modifications or alterations to the original conformity of the product are not permitted unless expressly approved by PFI.

Before being marketed, the product undergoes rigorous tests to ensure maximum reliability.

The instructions in this manual do not replace but supplement the obligations for compliance with the legislation in force on the safety and accident prevention regulations in force in the country of use.

With reference to what is reported in the manual, PFI declines all responsibility in the case of:

- Installation of the product not in compliance with the procedures indicated in the manual and / or in the applicable national safety standards;
- Reverse use of the product as reported in the manual and / or in the national laws in force on safety and accident prevention;
- Failure or incorrect observance of the instructions for use provided in the manual;
- Defects caused by incorrect power supply;
- Mechanical and electrical modifications and / or changes etc. not authorized, in writing, by PFI;
- Use by non-subjects;
- Failure to use personal protective equipment, prescribed by regulations, depending on the maneuvers or interventions to be carried out;
- Failure to use suitable clothing suitable for performing tasks without dangerous impediments;
- Failure to comply with the maximum load capacity of the product as described on the identification plate.

Use of finger safe sections for door heights <2.75m.

Cables outside the track system are not allowed, unless the cables are covered.

1.4 Identification of the manufacturer

The product is designed, manufactured and tested by:

PFI

Sabancı Organize Sanayi Bölgesi
23 Nisan Caddesi No: 8
Adana / Türkiye

1.5 Guarantee

PFI offers for all products marketed a guarantee against material defects or construction defects for a period of 24 months:

- For the first 12 (twelve) months, the warranty includes the replacement and / or free repair of the parts which, in the opinion of the PFI Authorized Center, are found to be defective due to material and / or manufacturing defects, in addition to the necessary labor.
- For the next 12 (twelve) months, the warranty is extended to manpower only, should material and / or manufacturing defects be found in the judgment of the Authorized Center PFI, therefore the cost of spare parts, transport costs and any charge not expressly mentioned, will be totally borne by the user.

! Electronic parts, wires, circuit boards, oil, fuses and nuts and bolts are excluded from the warranty!

The warranty starts from the day of collection of the goods at the PFI warehouse.

The transport document issued at the time of collection or the delivery note of the transport company to which the goods will be entrusted will prevail.

PFI ensures that its products are without defects and agrees to replace all defective parts ex works, under the following conditions:

- The defect must be found within the warranty period;
- The defect must be communicated directly to PFI;
- The defect must be recognized by the Authorized Center;
- The product must not have been altered, damaged or used inappropriately;
- The product must be used following the instructions contained in this manual;
- Only original spare parts must be used;
- The periodic maintenance provided for in this manual must only be carried out by Authorized Centers PFI;

! The components of the product not manufactured by PFI, such as the engine and the hydraulic power unit are covered by the manufacturer's warranty!

The guarantee is not recognized in case of:

- Failure to carry out the maintenance operations provided for in the user manual;
- Repairs, Changes and / or interventions carried out by unauthorized persons; - Uneven use of information contained in the manual;
- Alteration or cancellation of identification numbers;
- Defects due to improper use of the equipment;
- Machines sold on hire; - Usury;
- Damages due to improper use or neglect;
- Painted parts subject to corrosion, oxidation by direct exposure, or not, to atmospheric agents;
- Declarations reported by third parties regarding the recognition or otherwise of the guarantee;

PFI declines all responsibility in case of:

- Damages deriving from improper use or from repairs and / or modifications not professionally carried out;
- Damage caused by negligence and wear and tear or alteration of the components by the user or third parties;
- Damage caused during transport;
- Damages resulting from failure to understand the manual;
- Delays in carrying out repair and / or replacement work on defective parts;
- Failure to use the product during the repair period;

All products must be subjected to periodic maintenance according to what is established in this manual. Maintenance must only be carried out by PFI Authorized Centers. Failure to observe maintenance schedules will void all sorts of guarantees.

! The guarantee is void if the maintenance instructions are not observed!

All spare parts of the product must be original and ordered directly from PFI or Authorized Centers.

! The warranty is void if non-original spare parts are used!

! Any changes in the appearance, weight, color, dimensions and technical descriptions listed in the catalogs, price lists, manuals, offers and order confirmations, where they fall within the tolerances allowed on the market, do not justify any dispute of the supply!

1.6 Storage and disposal

If after delivery no immediate installation is carried out, the products can be stored. The environment in which they will be stored must:

- Have a flat and horizontal bottom;
- Be closed (protected from bad weather and humidity);
- Being not subject to flooding;
- Be free from dust, acids or corrosive substances;
- Have a temperature between -15 ° C and + 40 ° C;

! In the event of a long stay, all non-galvanized parts must be greased and protected!

Products cannot be disposed of with municipal waste.

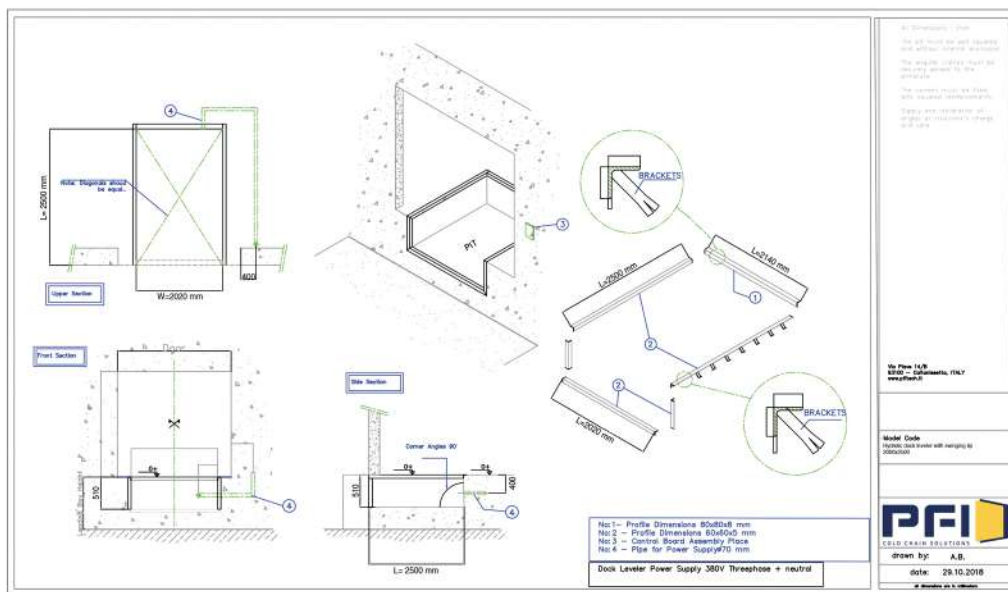
For disposal, observe the regulations in force in the country in which the product is used.

For the disposal of used oils or similar products, rubber and plastic parts and ferrous materials, contact your municipality, a specialized company or the Ecological Oasis

CONSTRUCTION OF THE PIT

A) PREPARATION

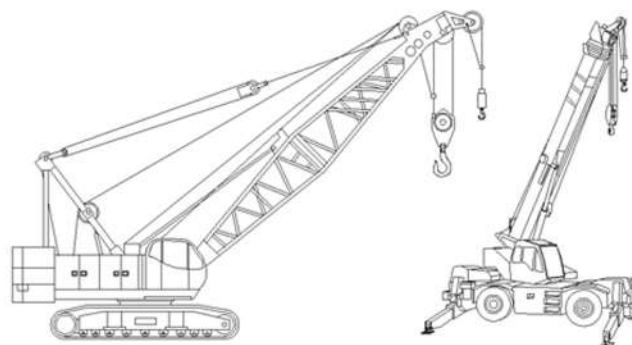
The customer must take care to build the pit at least one week before the arrival of the ramps at the construction site.
The pits must be built following only the indications provided by PFI when ordering (example below Fig.1)



(Fig. 1)

B) ACCESSORIES AND WORKERS

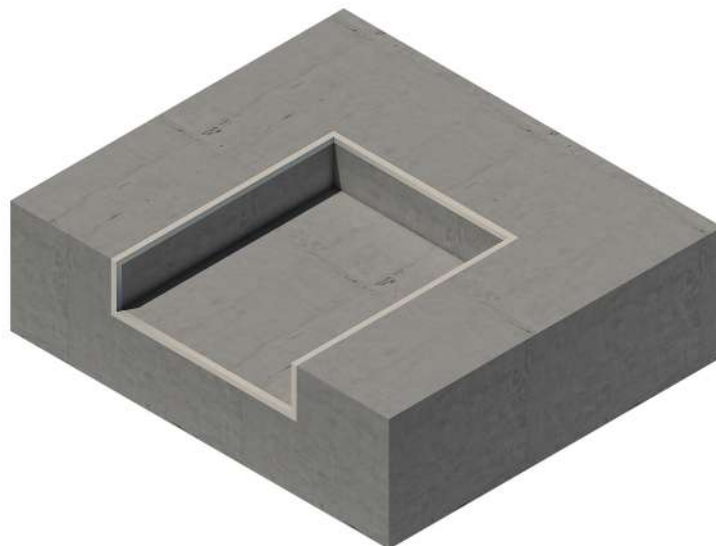
In order to install the PFI platforms, it is necessary to find one or more lifting cranes, an expert locksmith and an expert electrician.



INSTALLATION

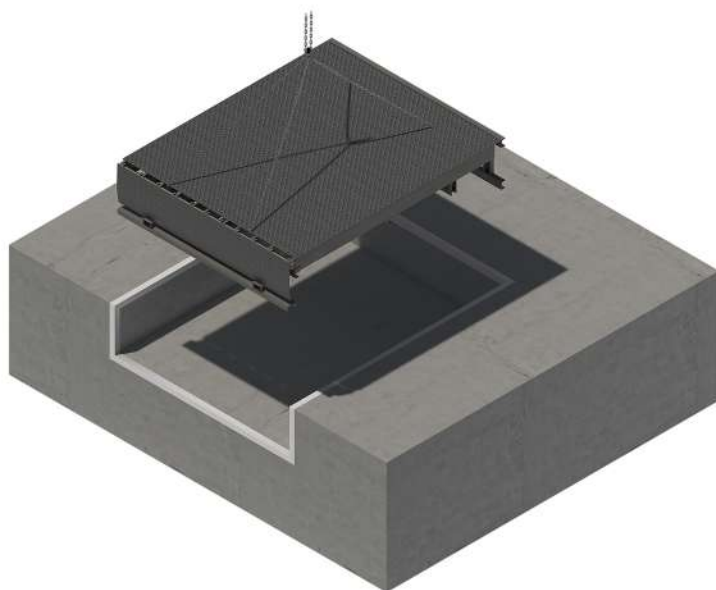
C) PIT CLEANING

Before starting any type of operation, make sure that the pit is completely cleaned of rubble and / or construction waste



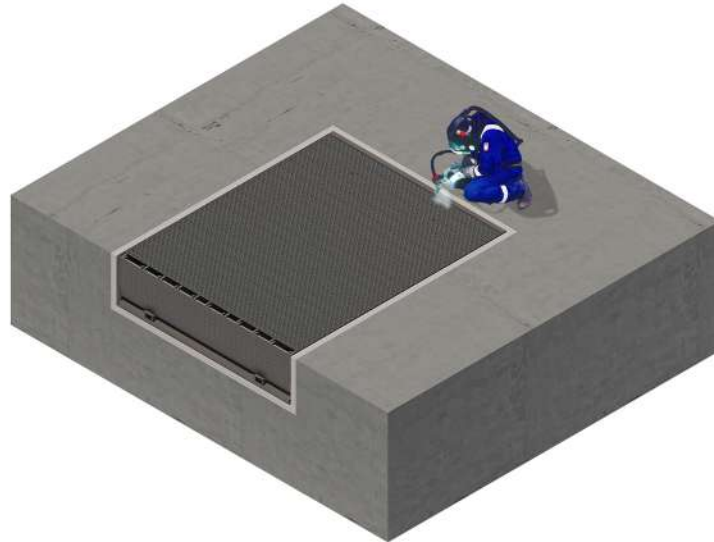
D) LIFT THE DOCK LEVELER

In order to lift the platform with the lifting crane, it is necessary to anchor it using two hooks located in the rear part of the platform and two hooks located in the front cylinder around which the hinges of the lip rotate



E) WELDING

As soon as the platform is housed inside the pit, an expert welder must weld it to the steel arms previously embedded in the concrete.



F) WIRING

At the end of the operations described, the electrical wiring must be carried out in order to be able to use the dock leveler.





+90 212 347 09 30 - 31
Balmumcu Mah. Gazi Umur Paşa Sk. Balmumcu Plaza 3 No: 34 D:4
Beşiktaş / İstanbul / Turkey

+90 322 394 47 25 - 26
Hacı Sabancı Organize Sanayi Böl. 23 Nisan Cad.
No: 8
Adana / Turkey

info@pfi.it
www.pfi.it



+39 0934 682747
via Piave
No: 14/B
93100 - Caltanissetta / Italy