

01

TECHNICAL DATA SHEET

HEAVY SERIE SLIDING DOORS



SLIDING DOOR

HEAVY SERIE

Frame

Sliding door frames are made from Aluminum. Heavy series doors are equipped with stainless steel accessories.

All sliding doors have reinforcement sheets inside the frame for the accessories.

Our sliding cold storage door frames are suitable for all kinds of hygienic washing.

Blade

Our doors are available with 4 different thickness blade options.

Sliding cold storage door blades are produced as monoblock with 40-43 kg/m³ CFC-free polyurethane injected.

The blade-edge profile of all our sliding cold room doors is made from anodized aluminum.

In all our Heavy series cold storage doors, there are reinforcement sheets inside the blade for all the accessories.

In cold room doors, there is an one line of EPDM gaskets on the door blade, and a double line of EPDM gaskets in freezer room doors (except SBT9). There is a single line of heating cable inside the gasket in the freezer room doors.

Door blade is produced as in standard 0.5 mm thickness 130 μ PVC coated galvanized sheet. It can also be produced as 25 μ pre-painted galvanized sheet with any RAL color or A304 quality stainless sheet upon request. If desired, sheet thicknesses can be produced in the range of 0.5 and 1.2 mm.

Our sliding cold room door blades are suitable for all kinds of hygienic washing.

Rail

The rail system used in all our sliding doors is produced from anodized aluminum.

We do not use floor guide in all sliding cold room doors which are produced with a lower rail system.

The rails used in sliding doors are suitable for all kinds of hygienic washing.

Thresholds

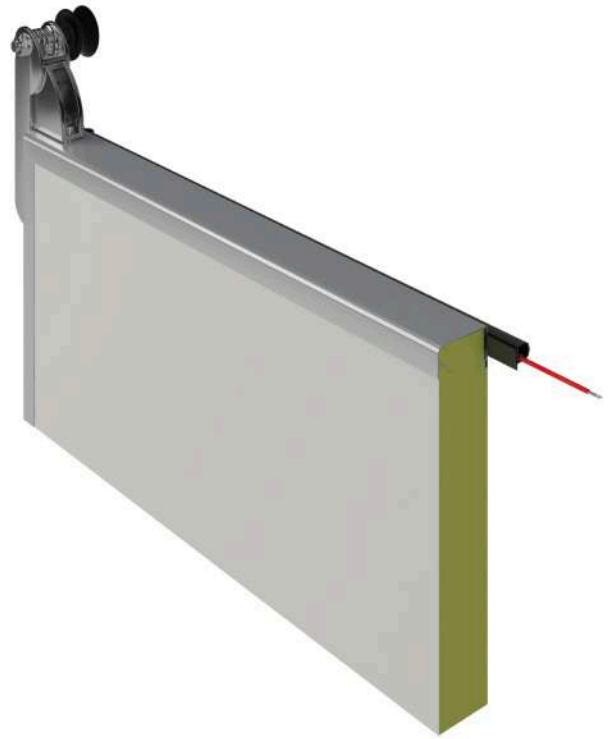
We have different options for any kind of application.

MODELS



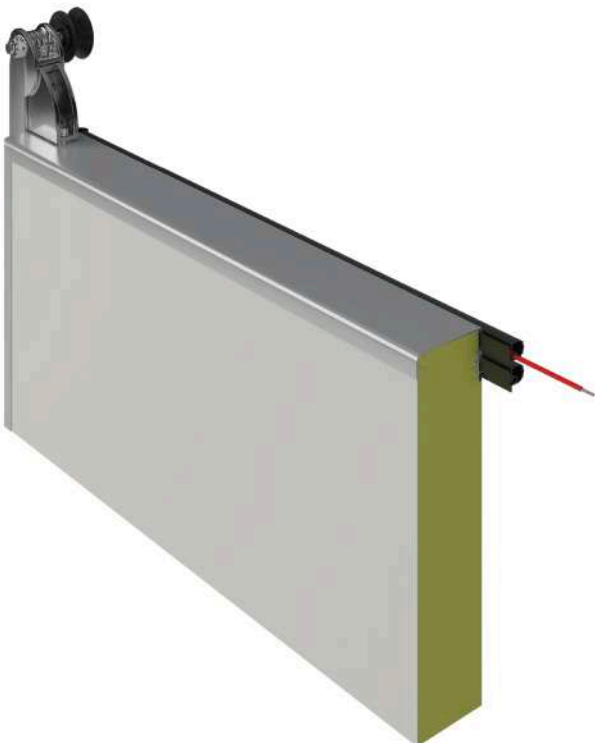
STN9

Blade thickness 90mm



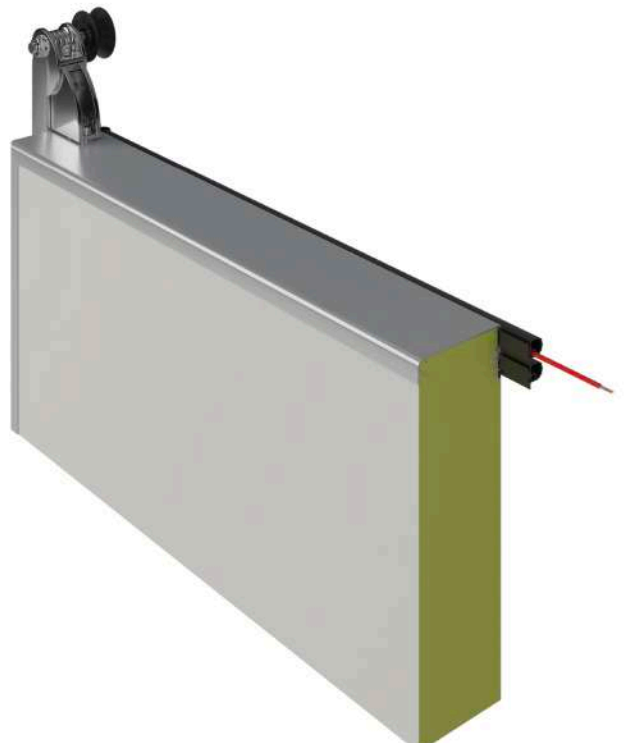
SBT9

Blade thickness 90mm



SBT12

Blade thickness 120mm



SBT15

Blade thickness 150mm

Heavy serie sliding door Technical specifications

Maximum dimensions	W 2.500 x H 3.500 mm *
Lateral space needed	W x 2 + 480 mm
Blade type	Monoblock, PUR injected 40 kg/m ³
Blade-edge profile	Anodized aluminum
Blade surface material	A: 0.5 mm thickness PVC coated galvanized steel B: 0.5 mm thickness RAL painted galvanized steel C: 0,6 ~ 1 mm thickness stainless steel
Door blade components	Stainless steel and composite plastic
Frame type	ALU / TCP or ALU / TPP
Rail material	Anodized aluminum with ramps in composite plastic
Options	Automation, lock, porthole, pedestrian door

	STN9	SBT9	SBT12	SBT15
Chiller (0 °C to 10 °C)	x	x		
Freezer (0 °C to -18 °C)		x	x	
Blast freezer (0 °C to -40 °C)			x	x
Blade thickness (mm)	90	90	120	150
Blade heater	N/A	25 W/m	25 W/m	25 W/m
EPDM gasket	Single line		Double line	
Insulation value	0,25 W/m ² K	0,25 W/m ² K	0,18 W/m ² K	0,15 W/m ² K
Frame heater	N/A	N/A	25 W/m	25 W/m
Threshold type	S/3 & S/2		S/3 - S/2 - S/2D	

* Oversized upon request

Available colors

RAL 2004
RAL 9002
RAL 1018

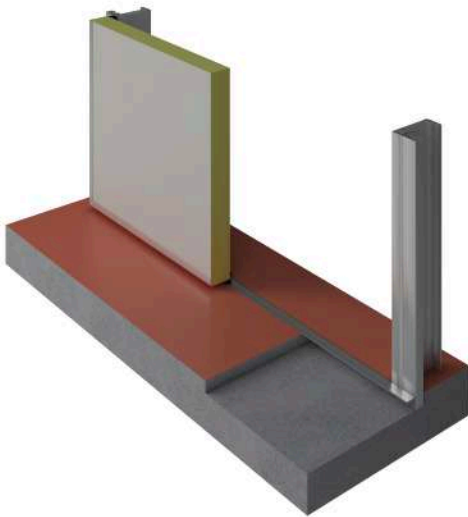


RAL 6018
RAL 3020
RAL 5010



SLIDING DOORS

THRESHOLD ALTERNATIVES

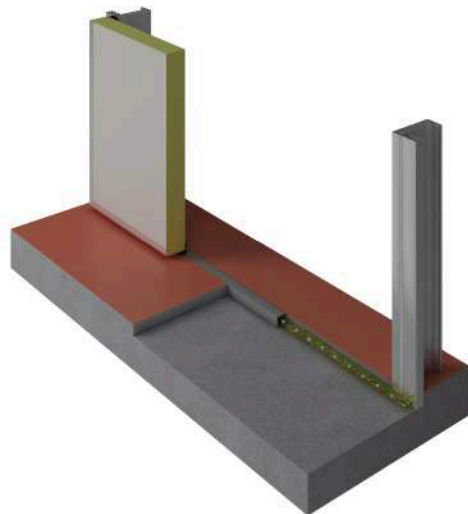


S/2

This threshold can be used for any kind of chiller or freezer room door.

There is a L shaped profile on the floor. Top side of the profile must be in the same level of the completed floor. Dimensions of the profile is 60x60mm.

By this way, we are sure about the perfect match of lower gasket to floor.

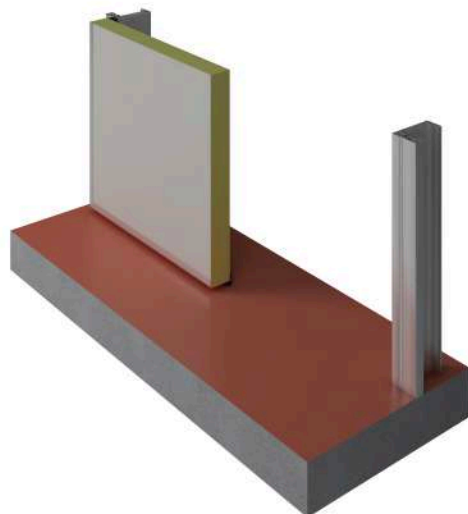


S/2D

This threshold is generally used in freezer application doors (SBT9 & SBT12 & SBT15).

There is a diathermic oiled threshold on the floor. Top side of the profile must be in the same level of the completed floor. There is diathermic oil and a heater in the profile (50x50mm dimension). By this way, we can add an extra floor heater to avoid of ice on floor and be sure about the perfect match of lower gasket to floor.

Frame produced 50mm longer than clear passage (h) of the door. This 50mm longer part of the frame will be under the complete floor level.



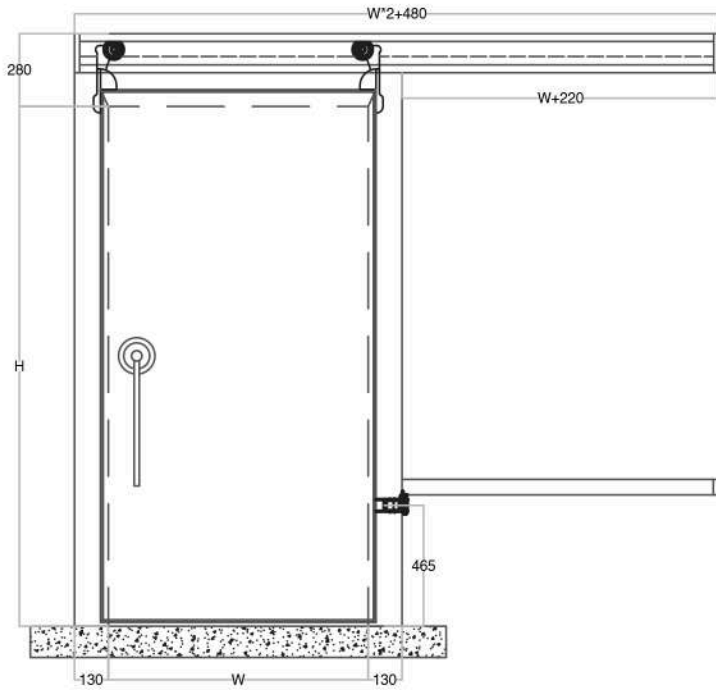
S/3

This threshold is generally used in chiller application doors (STN9).

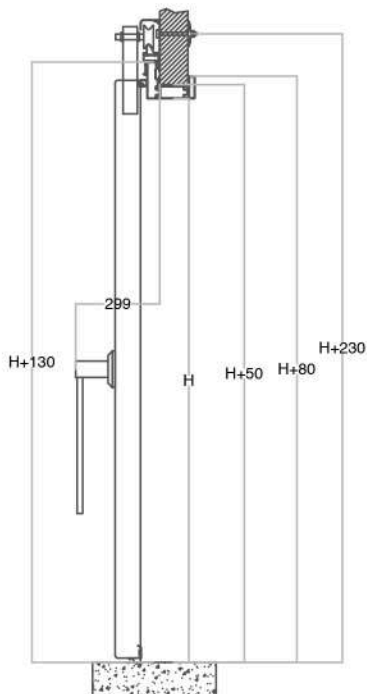
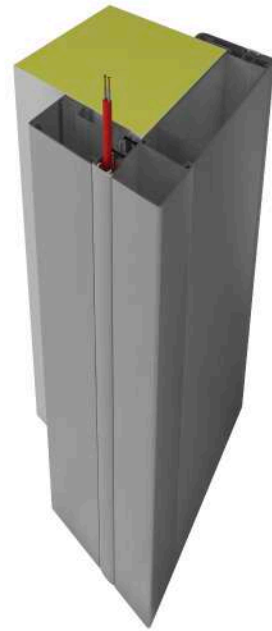
There isnt any profile on threshold. This is why it called as without threshold.

SLIDING DOORS

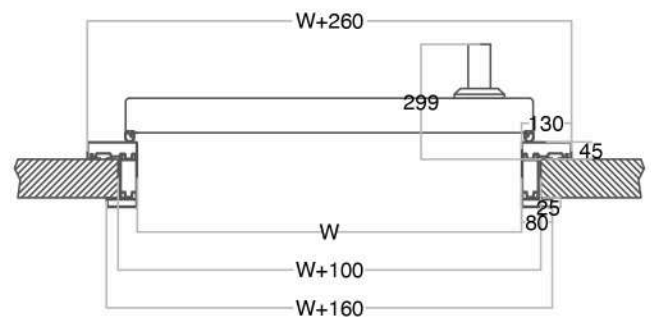
ALUMINUM FRAME TCP MODEL



Front view



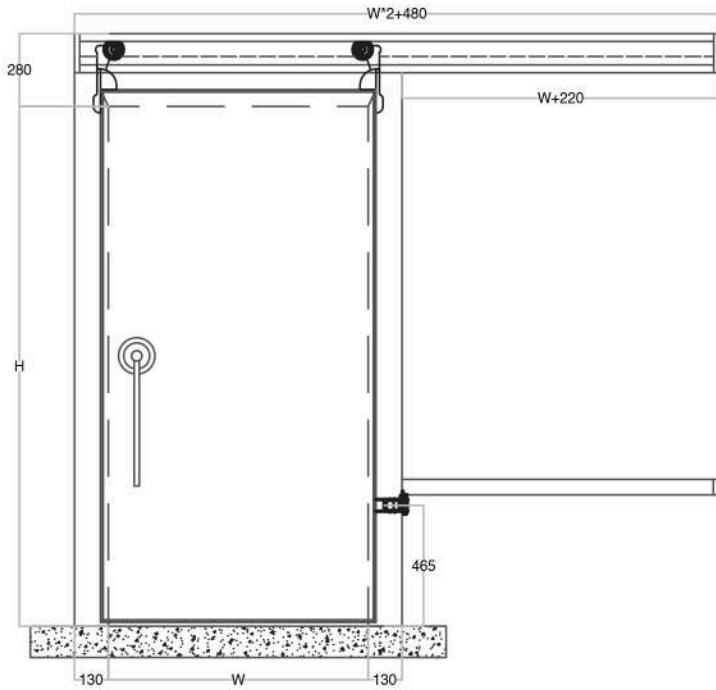
Side view



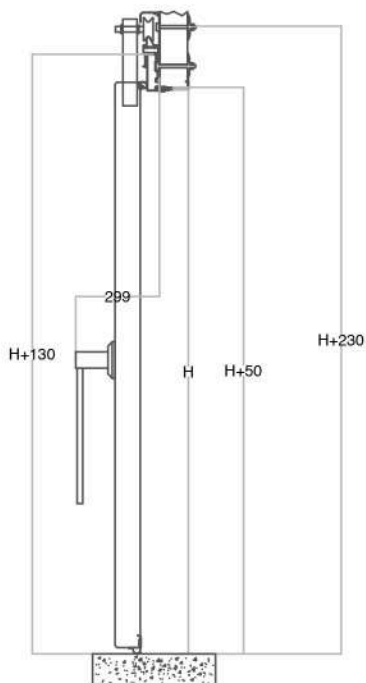
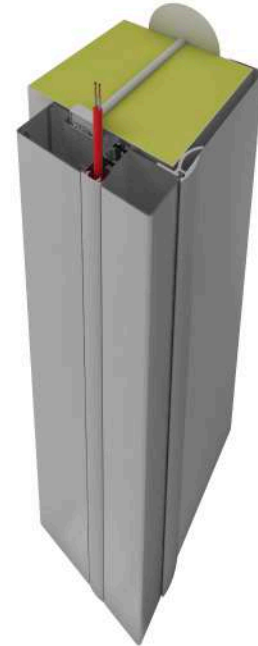
Top view

SLIDING DOORS

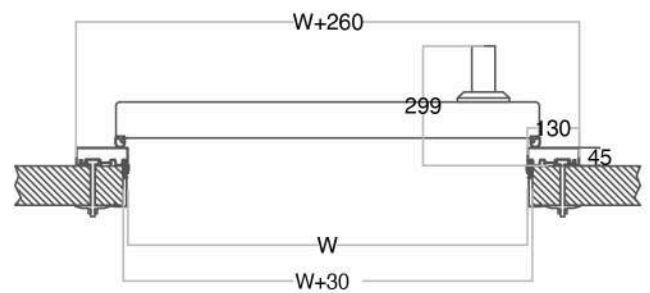
ALUMINUM FRAME TPP MODEL



Front view



Side view



Top view



KAVACIK MH. YAYABEYİ SK. İLAYDA İŞ MERKEZİ
NO: 12 KAT: 2
BEYKOZ / ISTANBUL / **TURKEY**
T: +90 216 693 05 35

VIALE DELLA REGIONE
NO: 36
93100 - CALTANISSETTA / **ITALY**
T: +39 0934 682747

INFO@PFI.IT
WWW.PFI.IT

**FOR THOSE WHO WISH TO
RELY ON SPECIALISTS IN
THE FIELD**