

# 01

TECHNICAL DATA SHEET

LIGHT SERIE SLIDING DOORS



## SLIDING DOOR

# LIGHT SERIE

### Frame

Sliding door frames are made from PVC. Light series doors are equipped with reinforced composite plastic accessories.

All sliding doors have reinforcement sheets inside the frame for the accessories.

Our sliding cold storage door frames are suitable for all kinds of hygienic washing.

### Blade

Our doors are available with 4 different thickness blade options.

Sliding cold storage door blades are produced as monoblock with 40-43 kg/m<sup>3</sup> CFC-free polyurethane injected.

The blade-edge profile of all our sliding cold room doors is made from anodized aluminum.

In all our Light series cold storage doors, there are reinforcement sheets inside the blade for all the accessories.

In cold room doors, there is an one line of EPDM gaskets on the door blade, and a double line of EPDM gaskets in freezer room doors (except SBT9). There is a single line of heating cable inside the gasket in the freezer room doors.

Door blade is produced as in standard 0.5 mm thickness 130 $\mu$  PVC coated galvanized sheet. It can also be produced as 25 $\mu$  pre-painted galvanized sheet with any RAL color or A304 quality stainless sheet upon request. If desired, sheet thicknesses can be produced in the range of 0.5 and 1.2 mm.

Our sliding cold room door blades are suitable for all kinds of hygienic washing.

### Rail

The rail system used in all our sliding doors is produced from anodized aluminum.

We do not use floor guide in all sliding cold room doors which are produced with a lower rail system.

The rails used in sliding doors are suitable for all kinds of hygienic washing.

### Thresholds

We have different options for any kind of application.

**MODELS**



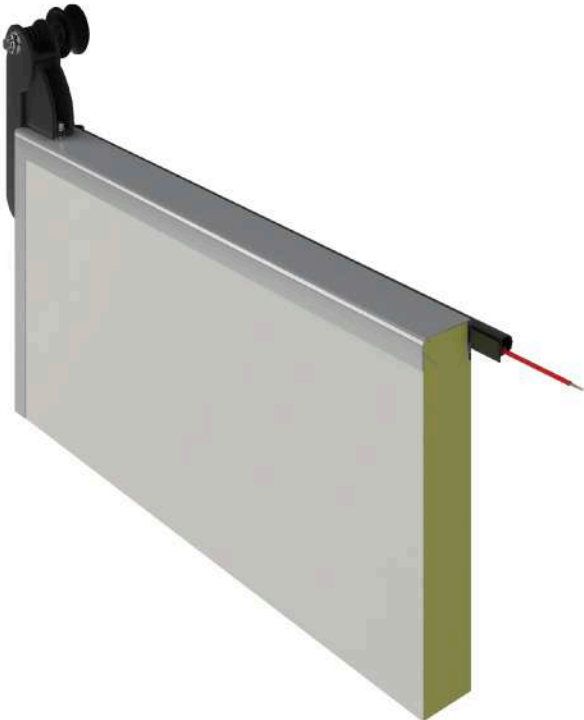
**STN7**

Blade thickness 70mm



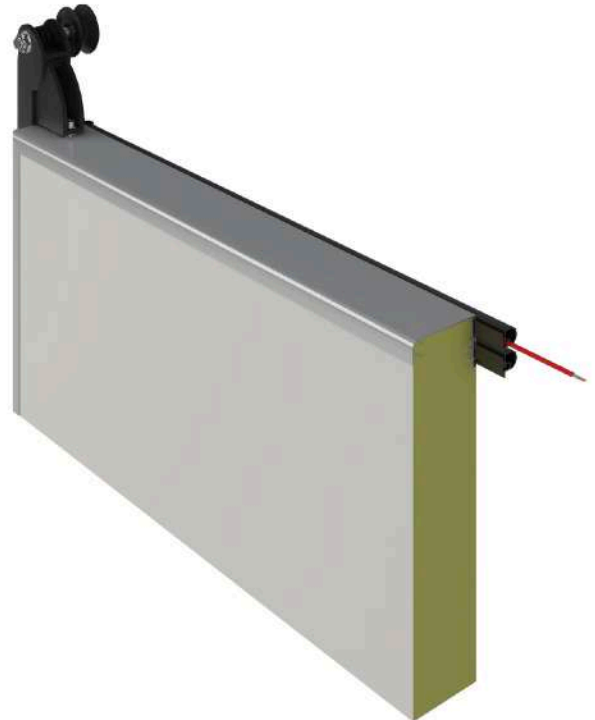
**STN9**

Blade thickness 90mm



**SBT9**

Blade thickness 90mm



**SBT12**

Blade thickness 120mm

# Light serie sliding door

## Technical specifications

<b>Maximum dimensions</b>	W 2.500 x H 3.500 mm *
<b>Lateral space needed</b>	W x 2 + 480 mm
<b>Blade type</b>	Monoblock, PUR injected 40 kg/m <sup>3</sup>
<b>Blade-edge profile</b>	Anodized aluminum
<b>Blade surface material</b>	<b>A:</b> 0.5 mm thickness PVC coated galvanized steel <b>B:</b> 0.5 mm thickness RAL painted galvanized steel <b>C:</b> 0,6 ~ 1 mm thickness stainless steel
<b>Door blade components</b>	Composite plastic
<b>Frame type</b>	PVC / TCP or PVC / TPP
<b>Rail material</b>	Anodized aluminum with ramps in composite plastic
<b>Options</b>	Automation, lock, porthole, pedestrian door

	STN7	STN9	SBT9	SBT12
<b>Chiller (0 °C to 10 °C)</b>	x	x		
<b>Freezer (0 °C to -18 °C)</b>			x	x
<b>Blast freezer (0 °C to -40 °C)</b>				x
<b>Blade thickness (mm)</b>	70	90	90	120
<b>Blade heater</b>	N/A	N/A	25 W/m	25 W/m
<b>EPDM gasket</b>	Single line			Double line
<b>Insulation value</b>	0,31 W/m <sup>2</sup> K	0,25 W/m <sup>2</sup> K	0,25 W/m <sup>2</sup> K	0,18 W/m <sup>2</sup> K
<b>Frame heater</b>	N/A	N/A	N/A	N/A
<b>Threshold type</b>	S/3 & S/2		S/3 - S/2 - S/2D	

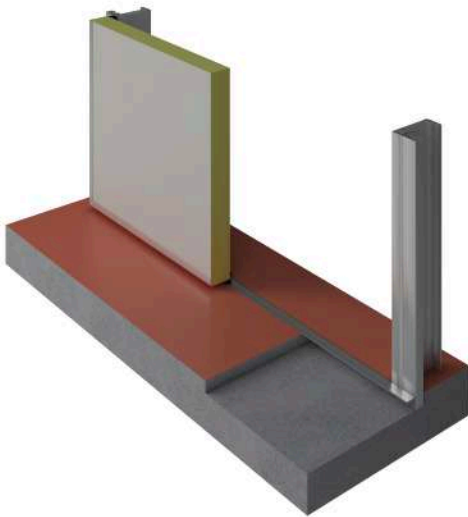
\* Oversized upon request

### Available colors

RAL 2004		RAL 6018	
RAL 9002		RAL 3020	
RAL 1018		RAL 5010	

## SLIDING DOORS

# THRESHOLD ALTERNATIVES

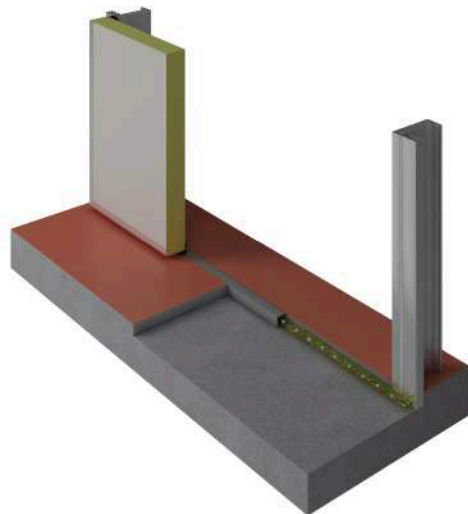


### S/2

This threshold can be used for any kind of chiller or freezer room door.

There is a L shaped profile on the floor. Top side of the profile must be in the same level of the completed floor. Dimensions of the profile is 60x60mm.

By this way, we are sure about the perfect match of lower gasket to floor.

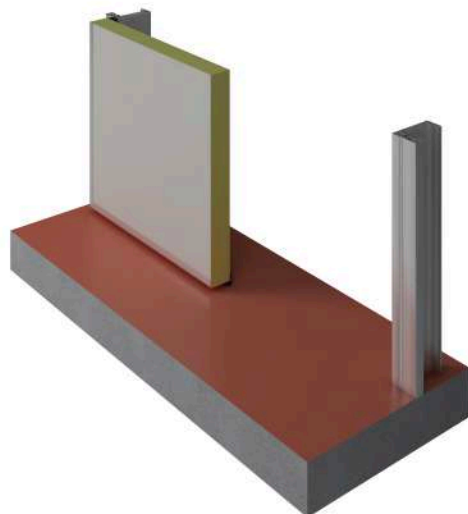


### S/2D

This threshold is generally used in freezer application doors (SBT9 & SBT12 & SBT15).

There is a diathermic oiled threshold on the floor. Top side of the profile must be in the same level of the completed floor. There is diathermic oil and a heater in the profile (50x50mm dimension). By this way, we can add an extra floor heater to avoid of ice on floor and be sure about the perfect match of lower gasket to floor.

Frame produced 50mm longer than clear passage (h) of the door. This 50mm longer part of the frame will be under the complete floor level.



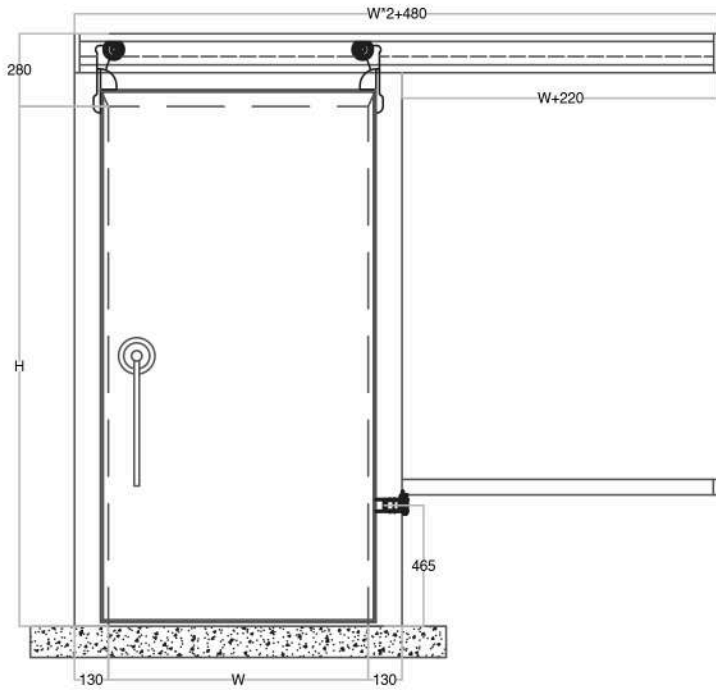
### S/3

This threshold is generally used in chiller application doors (STN9).

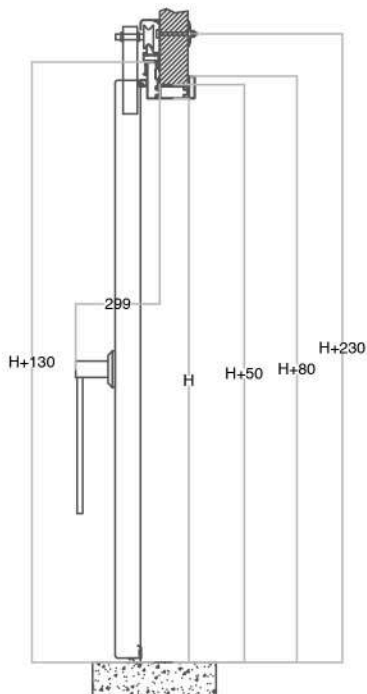
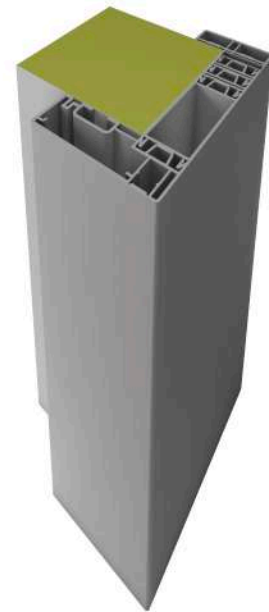
There isnt any profile on threshold. This is why it called as without threshold.

SLIDING DOORS

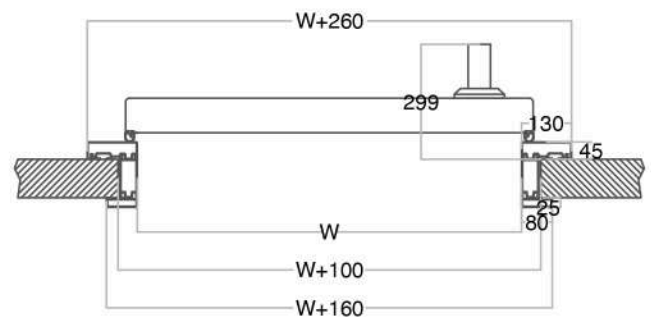
# PVC FRAME TCP MODEL



Front view



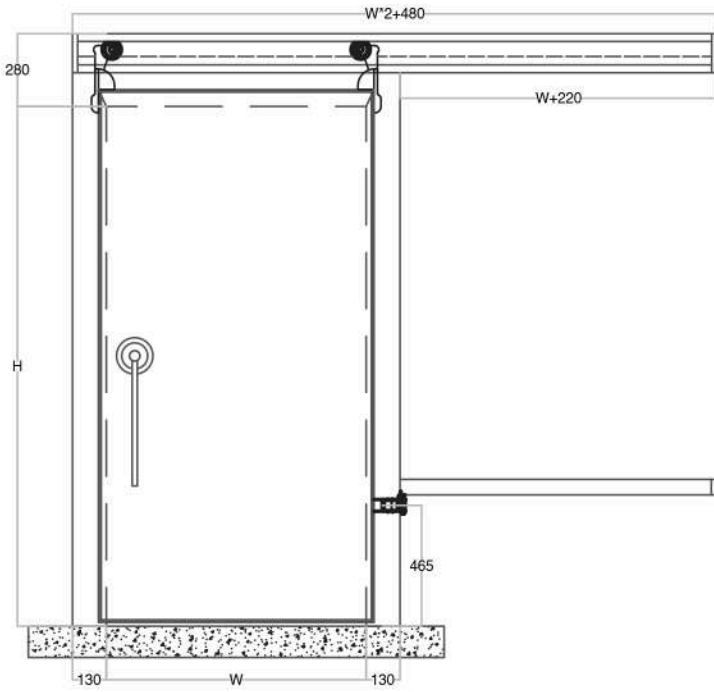
Side view



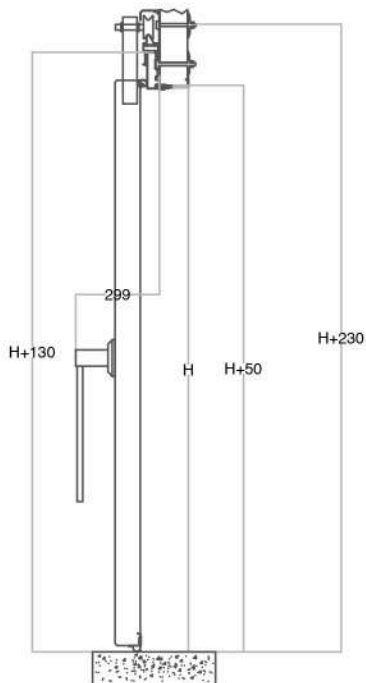
Top view

SLIDING DOORS

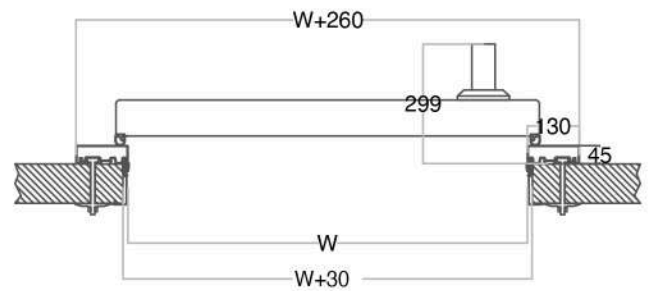
# PVC FRAME TPP MODEL



Front view



Side view



Top view



KAVACIK MH. YAYABEYİ SK. İLAYDA İŞ MERKEZİ  
NO: 12 KAT: 2  
BEYKOZ / ISTANBUL / **TURKEY**  
T: +90 216 693 05 35

VIALE DELLA REGIONE  
NO: 36  
93100 - CALTANISSETTA / **ITALY**  
T: +39 0934 682747

INFO@PFI.IT  
WWW.PFI.IT

**FOR THOSE WHO WISH TO  
RELY ON SPECIALISTS IN  
THE FIELD**